

# Commodity Weekly Technicals

Monday, 09 December 2013

## Technical Outlook

**Karen Jones**  
+44 207 475 1425  
Karen.jones@commerzbank.com

Bloomberg code change  
CBIR to **CBKR** and CBEQ to **CBKR**



App versions now available, search 'Commerzbank Research' through the App store or Google play.

**For important disclosure information please see end of the document.**

# Technical Outlook

Market	Short term view (1-3 weeks)
S&P GSCI TR Index:	Erosion of 200 day ma suggests unfinished business on the topside
NYMEX Light Crude Oil:	Bid but move higher should struggle to regain 100.00.
ICE Brent Crude Oil:	Struggling to maintain moves higher
NYMEX Heating Oil:	Still holding below the 3.0806 mid October peak on a closing basis
ICE Gasoil:	Struggling at the 947/948.75 resistance, which is holding on a closing basis
NYMEX Natural Gas:	2009-2013 downtrend eroded look for the 4.44 2013 high to be tested.
RBOB Gasoline:	An upside bias is maintained above the 55 day ma at 2.6438
LME Copper:	No resistance of note dislodged. Maintain a neutral to negative bias
LME Aluminium:	Divergence of the weekly RSI suggests that the down move has aborted for now
LME Nickel:	As suspected support at 13205/12978 has held. Possible base developing
LME Zinc:	Robust rally returns market to the middle of its 2 year range and neutralises the market once more.
ICE ECX Emissions Dec 2014:	3 month downtrend eroded, completes a bullish falling wedge pattern
Phelix January 2014:	Challenging the 55 day ma at 37.77

# S&P GSCI Total Return Index

Erosion of 200 day ma suggests unfinished business on the topside

- › The S&P GSCI Total Return Index eroded its 3 month downtrend and has cleared the 55 and 200 day ma. While we acknowledge that the recent strength is regarded as corrective only still, it is possible that we could see this extend a little further.
- › The move will shortly encounter the 50% retracement at 4872, but much tougher resistance is located at 4930/41, which is the 61.8% retracement and the high seen in October. We look for this to hold the topside and provoke failure.
- › We should then see attention revert to the downside and the 2009-2013 support line at 4661. A close below here and the 4630 recent low should be enough to trigger another leg lower.
- › A weekly close below 4630 would be very negative and target initially the 4493.50 2013 low. Failure here will target 4442/47, the 50% retracement of the move from the 2009 low to the 2011 high and the 78.6% retracement of the move from 2012. This represents our medium term downside target.

S&P GSCI Total Return Index Daily Chart



# S&P GSCI Total Return Index - weekly

Re-drawn trendline at 4661



# Nymex Light Crude Oil

Bid but move higher should struggle to regain 100.00.

- › WTI crude oil continues to claw higher. It has eroded the downtrend and 50% retracement to reach the 200 day ma at 98.56. We have a double Fibonacci retracement at 99.47/58. Our preferred scenario is that the market will struggle to regain 100.00.
- › Failure here will suggest a failure and a slide back to the 200 week ma at 92.11/91.77.
- › Failure at 91.31/26 will put the April trough at 85.61 back on the map.
- › The Elliott wave count suggests that the corrective rebound should terminate between the 200 day ma and 101.26.
- › Above 102.00 would allow for an extension to possibly 104.38/42, the 61.8% retracement of the move down from the 28<sup>th</sup> August. This would be the maximum that we would allow on the topside prior to failure.

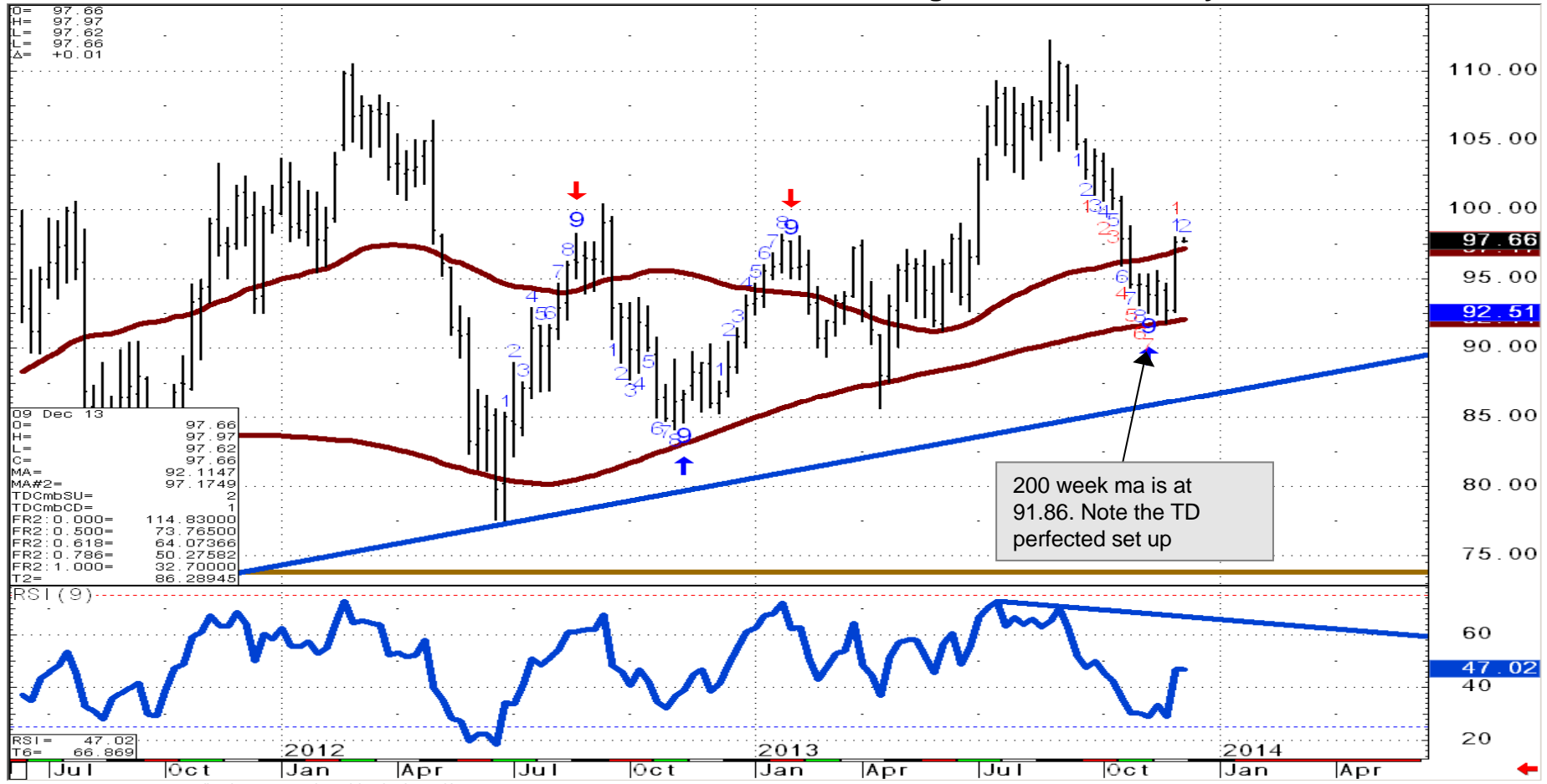
**NYMEX Light Crude Oil Daily Continuation Chart**



# NYMEX Light Crude Oil

TD perfected set up on the weekly chart

NYMEX Light Crude Oil Weekly Continuation Chart



Source: CQG Inc. © 2013 All rights reserved worldwide. <http://www.cqg.com>

Mon Dec 09 2013 11:49:42

# ICE Brent Crude Oil

Struggling to maintain moves higher

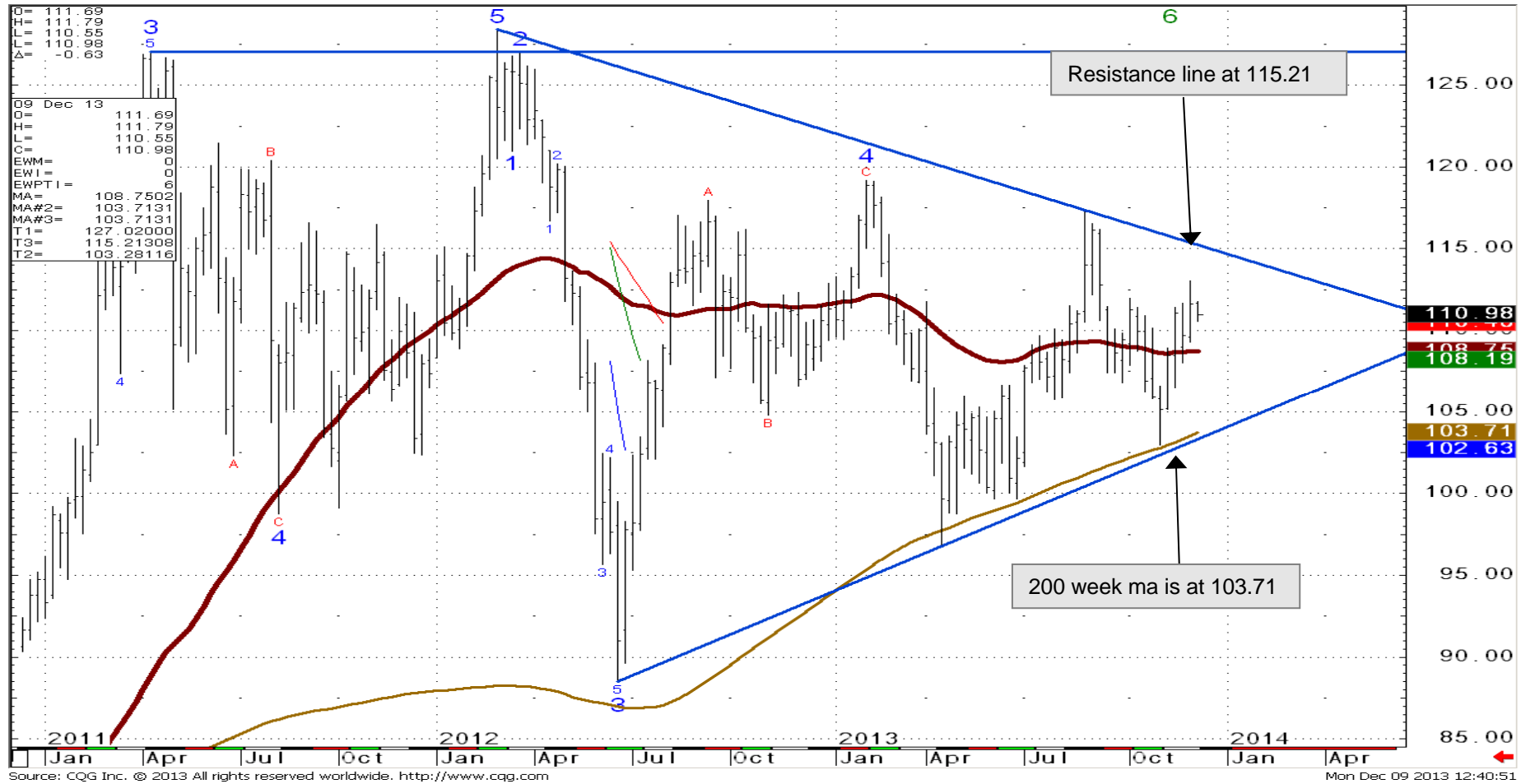
- › Brent crude Oil repeatedly tested the 111.50/112.00 mid October high last week. We saw a minor breach of this resistance to 113.00, the move was not sustained and we have dropped lower.
- › While above the 55 day ma at 109.02, there is room for a small overshoot to the 78.6% retracement at 114.26, but we would expect this to cap the topside.
- › We will maintain a neutral to negative bias longer term while capped by here. Short term a slide back below 107.51 is needed to alleviate immediate upside pressure and signal losses to the 103.71 200 week ma.
- › Key resistance is the 115.21 2012-2013 resistance line.

ICE Brent Crude Oil Daily Continuation Chart



# ICE Brent Crude Oil - Weekly

Topside expected to remain capped by the 115.21



Source: CQG Inc. © 2013 All rights reserved worldwide. <http://www.cqg.com>

Mon Dec 09 2013 12:40:51



# Brent Vs Crude Oil daily

Failing ahead of the 20.03 2011-2013 resistance line

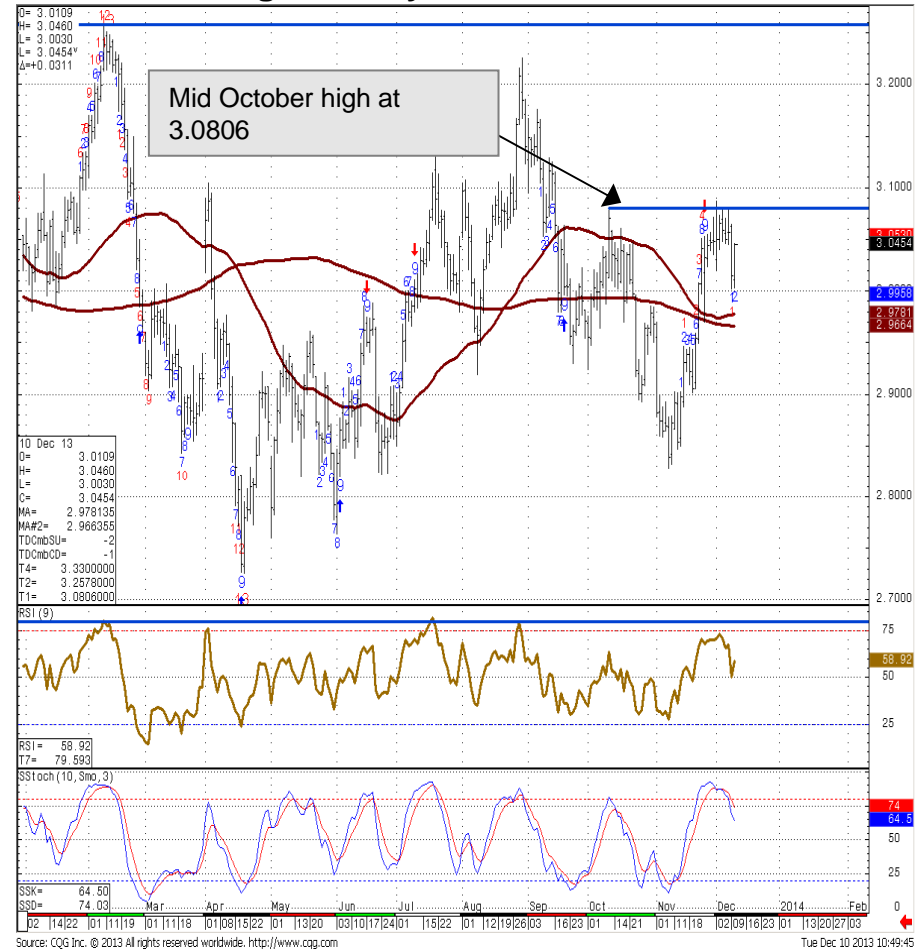


# NYMEX Heating Oil

Still holding below the 3.0806 mid October peak on a closing basis.

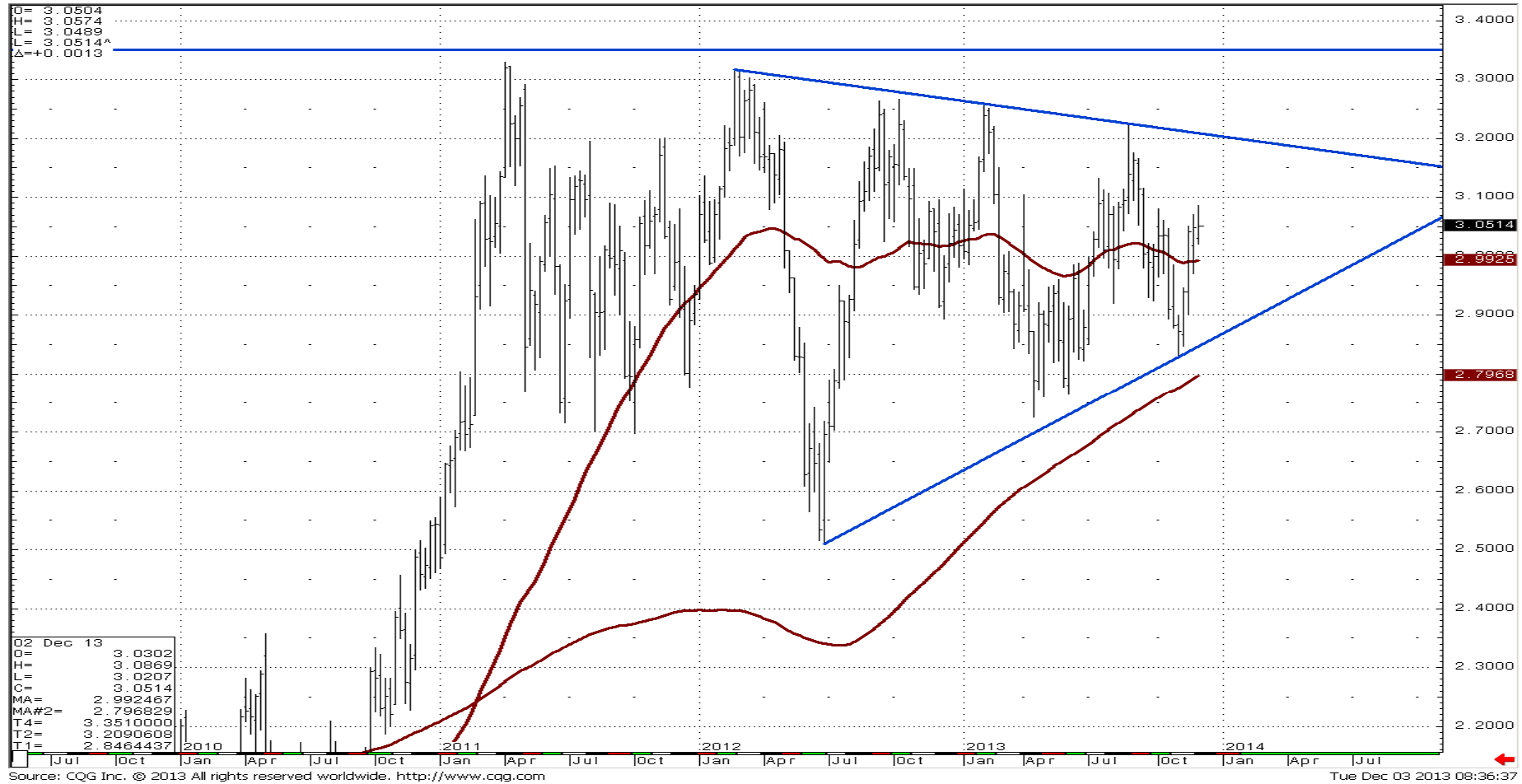
- › NYMEX Heating Oil has pushed hard all week into the 3.0806 October high, but has continued to remain capped here. While capped here, the risk remains for failure and a slide back to the 2.8222/2.79 supports. Please note that there is little to suggest that the market is set to sustain another leg higher at this stage.
- › The market is in the middle of a large range and is neutral medium to longer term. Short term loss of the 200 day ma at 2.9665 is needed to alleviate upside pressure.
- › Failure here will see a retest of the 2.8285 recent low and the 2.8222 24<sup>th</sup> June low. Directly below here lies the 200 week ma at 2.802 and there is currently a reluctance to tackle this major support. As a consequence the market remains range bound longer term.
- › A close above 3.0806 will see a deeper rally to 3.14, the 78.6% retracement of the move.

**NYMEX Heating Oil Daily Continuation Chart**



# Heating Oil - Weekly

In middle of range

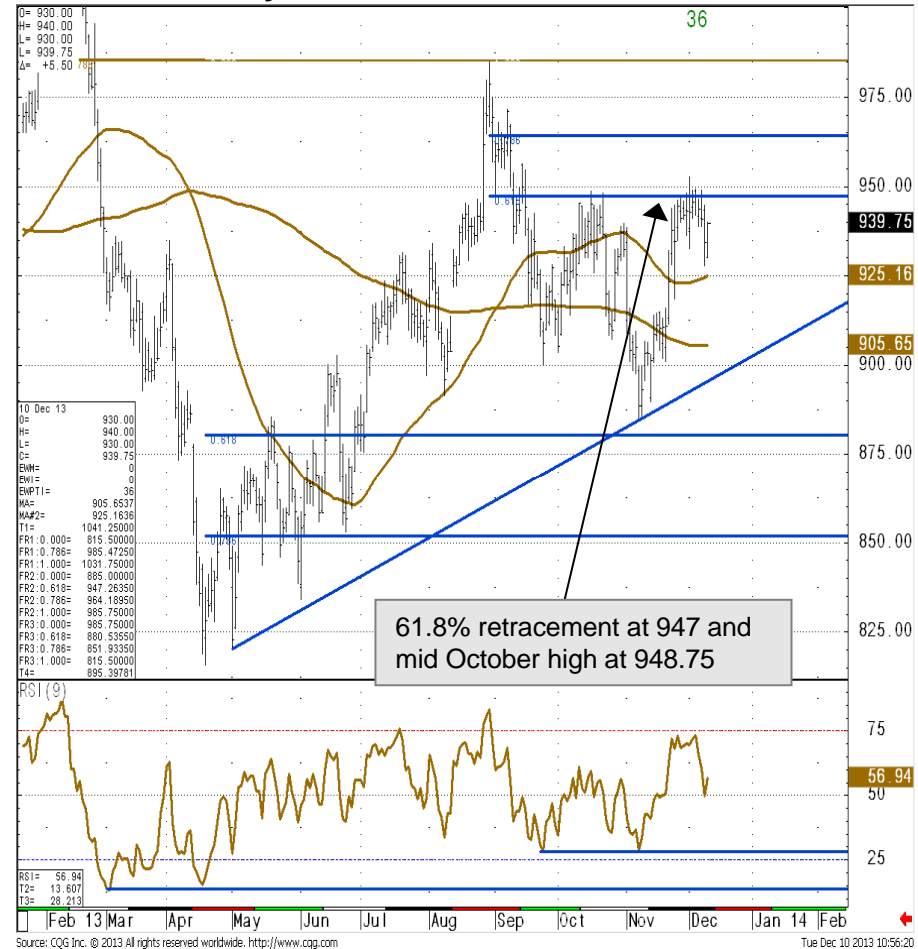


# ICE Gasoil

Struggling at the 947/948.75 resistance, which is holding on a closing basis

- › ICE Gasoil continues to probe the 61.8% and mid October high at 947 and 948.75, this has been penetrated BUT we have yet to see a close above here. Provided this contains the topside the market will maintain a neutral to negative bias.
- › A close above here will force us to neutralise our view and allow for a deeper rally to the 2013 resistance line at 963.50. This in turn guards the 985.75 August high. It is also the location of the 78.6% retracement (at 985.47) and, if challenged, we again look for this to hold the topside.
- › Key support is regarded as the 200 week ma at 877.05 and the 2009-2013 uptrend at 889. These remain the major supports
- › Slightly longer term, the market is range bound in a very large range – initial parameters are 875/1017 and within this range the market is neutral.

ICE Gasoil Daily Continuation Chart

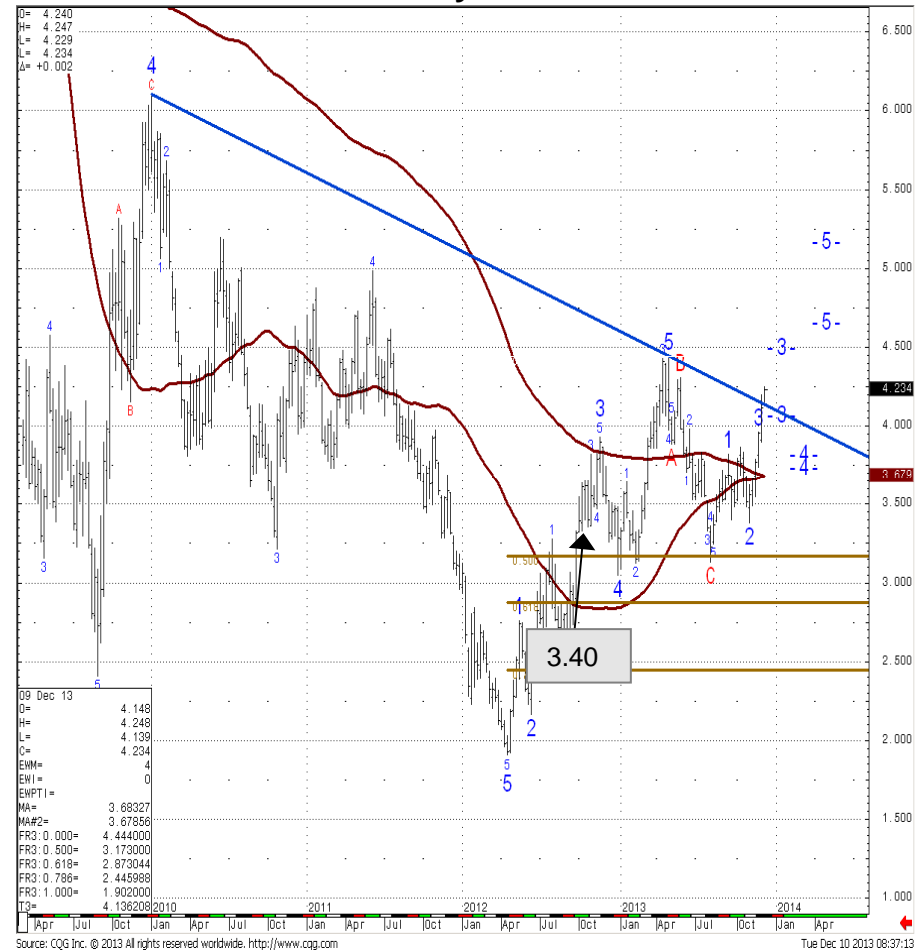


# NYMEX Natural Gas

2009-2013 downtrend eroded look for the 4.44 2013 high to be tested.

- › Natural Gas has cleared psychological resistance at 4.00 – and has also eroded the 4.1625/78.6% retracement and the 2009-2013 resistance line at 4.1458 and in doing so introduced scope to the 4.44 2013 high.
- › While the short term uptrend, currently at 3.7630 contains dips lower, then the market should remain well placed to have another crack on the topside. The Elliott wave count on the daily chart is suggesting the market should remain well supported on pullbacks to the 4.00/3.90 region.
- › We have an accelerated uptrend at 4.0587 and while above there remains immediately bid.
- › Beyond 4.44 the 2013 high lies the 4.68 23.6% retracement of the move down from 2008. Currently the market looks to have seen a significant break higher and we suspect will eventually head over 5.00.

**NYMEX Natural Gas Weekly Continuation Chart**



# NYMEX RBOB Gasoline

An upside bias is maintained above the 55 day ma at 2.6438

- › RBOB Gasoline is struggling to maintain upside pressure – for now the market is consolidating above the 55 day ma at 2.6438 – and while above here an upside bias persists. While above the 55 day ma the market remains capable of near term gains to 2.784
- › We would allow for a move into the 2.7840/2.8288 band (50% retracement), but we should see price struggle to regain the 200 day ma at 2.8370. Failure here would leave the market in the bottom half of its range and likely to retest the 2.4440 November 2011 low. Please note however that we have no strong bias and are relatively neutral.
- › Longer term please note that the market has been contained in a converging range for some time (years). A close below 2.4440 will introduce scope for a target sub 2.000 longer term.

## RBOB Gasoline Daily Continuation



# LME Copper

No resistance of note dislodged. Maintain a neutral to negative bias

- › LME Copper we are somewhat surprised to have seen such a vigorous rebound. Nonetheless seeing as no resistance of any note has been dislodged our view remains neutral to negative. Directly overhead lies the 200 day ma at 7203 and this is reinforced by the 55 week ma at 7408 and the 2011-2013 resistance line at 7488.
- › We continue to hold a bearish bias while capped by 7408/7534 (May high). The late July low at 6721 will continue to be targeted while no daily chart close above the May peak at 7534 is being made. Initial support is last weeks low at 6910/14 – this is also the 61.8% retracement.
- › Failure at 6721 will shift attention back to major support at 6635/02 (October 2011 low, 50% retracement of the move up from 2008 to 2011 and June trough).
- › Below 6635/02 would trigger another leg lower to 6037.50, the low seen in 2010.
- › A daily close above 7534 (not favoured), however, would mean a continuation of the August advance and target the 61.8% Fibonacci retracement at 7680 and the 2011-2013 resistance line at 7488(not favoured).

LME Copper Daily Chart



# LME Aluminium

Divergence of the weekly RSI suggests that the down move has aborted for now

- › LME Aluminium did not sustain a break of key support at 1776/1758. This is where the October 2009 low and this year's June trough were found. The recent low of 1736 was accompanied by a major divergence of the weekly RSI. This reflects a severe loss of downside momentum and we suspect that the down move has aborted for now.
- › Directly above the market we have the 55 week ma at 1908 and the 1949/81 August and June highs and only if these were overcome would the chart picture alter enough to become more positive. Please note that the 2011-2013 resistance line cuts in at 1874.
- › While capped by this resistance the chart remains longer term negative and we continue to view aluminium as vulnerable on the downside longer term.
- › We have longer term downside targets which come in at the 1701.00 June 2009 high and eventually the 78.6% Fibonacci retracement of the 2009-11 uptrend at 1605.14.

LME Aluminium Weekly Chart



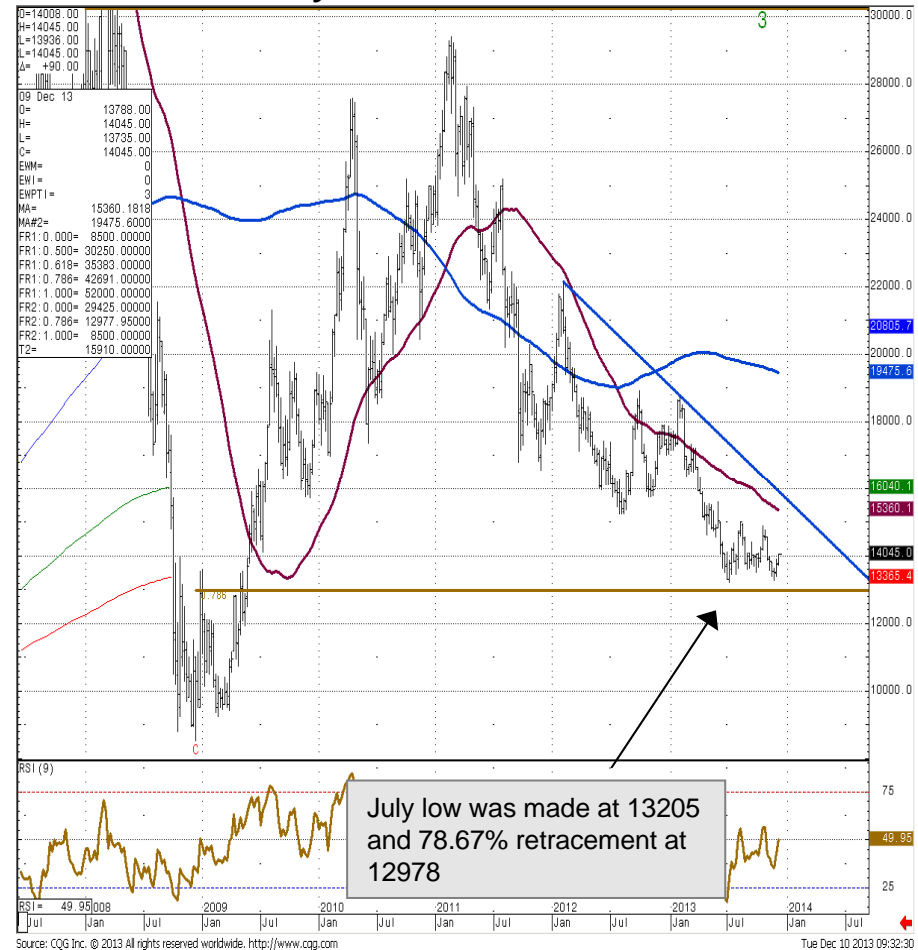


# LME Nickel

As suspected support at 13205/12978 has held. Possible base developing

- › LME Nickel has reversed just ahead of major support at 13205, the 2013 low and the 12978 78.6% retracement of the 2008-2011 rise. This has been our downside target for quite some time and we are alert to the idea that the market will again hold this on the next test. We noted last week the TD perfected set up on the daily chart and this together with a divergence of the daily RSI implied that this key support will hold the downside. This has now been seen.
- › Rallies look set to extend to 14618 (200 day ma) but rallies will need to clear the 15001 August high AND the 15910 2012-2013 downtrend to negate downside pressure. It is possible that the market is attempting to base from a longer term perspective and while the 12978 support holds we are neutral.
- › A weekly close below 12978 will push the 12844 April 2009 high and then the 11925 mid-May 2009 low into the picture.

LME Nickel Weekly Chart



# LME Zinc

Robust rally returns market to the middle of its 2 year range and neutralises the market once more.

- › LME Zinc has seen an aggressive counter move higher. This has completely negated the downside and returned prices to the middle of its 2 year range.
- › The rally is likely to find initial resistance at the 1980 October high and the 2009 2013 high. Key resistance lies at the 200 week ma at 2067 and the 2066 2011-2013 resistance line.
- › Key support is the 2010-2013 uptrend at 1847.47 followed by the more shallow 1800.94 2011-2013 support line.
- › These will all need to be eroded for the market to break free from a range which has dominated it for years.
- › Below 1800 will leave key support at 1745/1718.50 exposed – these are the lows seen in 2011 and 2012 .

**LME Zinc Weekly Chart**



# ICE ECX Carbon Emissions Dec 2014

3 month downtrend eroded, completes a bullish falling wedge pattern

- › December 2014 ICE ECX Carbon Emissions has recently spent some time base building circa 4.50. In this vicinity we find both the 200 day ma at 4.53 and the 4.33/50% retracement of the move seen this year. We suspected last week that the market may be base building and we continue to hold this view.
- › We market has just eroded its 3 month downtrend and is in the process of trying to clear its 55 day ma at 4.92. We believe the market has just completed a bullish falling wedge pattern and in doing so this pattern offers an upside measured target to 6.21. This target is achievable within the next 3 months.
- › We suspect that the market is base building longer term but will face tough resistance extending to 7.00. There is the 2008-2013 resistance line at 6.90, the April 2012 low and the 23.6% retracement of the move down from the 2008 peak. A longer term break above here is favoured and this would introduce scope to the 38.2% retracement at 9.72 longer term. A viable end of 2014 forecast is 7.50
- › Shorter term dips lower should find the previous resistance line now offers support at 4.76 and only below the 4.33 Fibonacci support would our positive bias be negated.

ICE ECX Carbon Emissions Dec 2014 Daily Chart



# Phelix January 2014

## Challenging the 55 day ma at 37.77

- › The Phelix Jan 2014 contract has reversed off the 36.83 78.6% retracement, and the market has rallied to its 55 day ma at 37.77, where the upmove has halted.
- › We suspect that the market is merely consolidating ahead of challenging this resistance and once cleared will be well placed to tackle the 200 day ma at 38.39. This is likely to act as a short term magnet for prices.
- › This is expected to act as the barrier to the 39.85 September 2013 peak.
- › Dips lower will find initial support at 37.20 ahead of 36.83/75, which we look to contain the downside. The 36.83 78.6% Fibonacci retracement level represents the last defence for the 36.02 August low.

## Phelix January 2014 Daily Chart



## Additional Information

### S&P GSCI

The S&P GSCI is world-production weighted; the quantity of each commodity in the index is determined by the average quantity of production in the last five years of available data. Such weighting provides the S&P GSCI with significant advantages, both as an economic indicator and as a measure of investment performance.

For use as an economic indicator, the appropriate weight to assign each commodity is in proportion to the amount of that commodity flowing through the economy (i.e., the actual production or consumption of that commodity). For instance, the impact that doubling the price of corn has on inflation and on economic growth depends directly on how much corn is used (or produced) in the economy.

From the standpoint of measuring investment performance, production weighting is not only appropriate but also vital. The key to measuring investment performance in a representative fashion is to weight each asset by the amount of capital dedicated to holding that asset. In equity markets, this representative measurement of investment performance is accomplished through weighting indices by market capitalization.

For commodities, there is no direct counterpart to market capitalization. The problem is that commodities, and the related price risks, are held in a variety of ways – long futures positions, over-the-counter investments, long-term fixed price purchasing contracts, physical inventory at the producer, etc. - making a complete accounting of capital dedicated to holding commodities from the time they are produced to the time they are consumed infeasible. A simple way to achieve a close analogue to true market capitalization, abstracting from differences in inventory patterns, is to note that the net long position of the economy is proportional to the quantity produced - hence, production weighting.

The S&P GSCI Total Return Index measures the returns accrued from investing in fully-collateralized nearby commodity futures;

Technical Analysis Research **COMMERZBANK**

**Daily Market Technicals**  
FX Outlook

Karen Jones  
+44 202 475 1620  
karen.jones@commerzbank.com



For important disclosure information please see pages 14 and 15.

Technical Analysis Research **COMMERZBANK**

**Strategic Technical Themes**  
Weekly Outlook and Technical Highlights

Karen Jones  
+44 202 475 1620  
karen.jones@commerzbank.com

Axel Rutolph  
+44 202 475 6721  
axel.rutolph@commerzbank.com



For important disclosure information please see pages 28 and 29.

Technical Analysis Research **COMMERZBANK**

**FX Emerging Markets Weekly Technicals**  
Technical Outlook

Axel Rutolph  
+44 202 475 6721  
axel.rutolph@commerzbank.com




For important disclosure information please see pages 16 and 15.

Technical Analysis Research **COMMERZBANK**

**Bullion Weekly Technicals**  
Technical Outlook

Axel Rutolph  
+44 202 475 6721  
axel.rutolph@commerzbank.com



For important disclosure information please see pages 12 and 14.

Technical Analysis Research **COMMERZBANK**

**Commodity Currencies Weekly Technicals**  
Technical Outlook

Axel Rutolph  
+44 202 475 6721  
axel.rutolph@commerzbank.com



For important disclosure information please see pages 14 and 15.

Technical Analysis Research **COMMERZBANK**

**Commodity Weekly Technicals**  
Technical Outlook

Karen Jones  
+44 202 475 1620  
karen.jones@commerzbank.com

Axel Rutolph  
+44 202 475 6721  
axel.rutolph@commerzbank.com




For important disclosure information please see pages 21 and 22.

Technical Analysis Research **COMMERZBANK**

**Asian Currencies Weekly Technicals**  
Technical Outlook

Axel Rutolph  
+44 202 475 6721  
axel.rutolph@commerzbank.com



For important disclosure information please see pages 24 and 25.

Technical Analysis Research **COMMERZBANK**

**Fixed Income Weekly Technicals**  
Technical Outlook

Karen Jones  
+44 202 475 1620  
karen.jones@commerzbank.com

Axel Rutolph  
+44 202 475 6721  
axel.rutolph@commerzbank.com



For important disclosure information please see pages 33 and 34.

## Other technical analysis reports we publish are:

- Monday:** Daily Market Technicals (FX), Strategic Technical Themes, FX Emerging Markets Technicals;
- Tuesday:** Daily Market Technicals (FX), Bullion Weekly Technicals;
- Wednesday:** Daily Market Technicals (FX), Commodity Currencies Weekly Technicals;
- Thursday:** Daily Market Technicals (FX), Asian Currencies Weekly Technicals, FX Strategy;
- Friday:** Daily Market Technicals (FX), Fixed Income Weekly Technicals.

This document has been created and published by the Corporates & Markets division of Commerzbank AG, Frankfurt/Main or Commerzbank's branch offices mentioned in the document. Commerzbank Corporates & Markets is the investment banking division of Commerzbank, integrating research, debt, equities, interest rates and foreign exchange. The author(s) of this report, certify that (a) the views expressed in this report accurately reflect their personal views; and (b) no part of their compensation was, is, or will be directly or indirectly related to the specific recommendation(s) or views expressed by them contained in this document. The analyst(s) named on this report are not registered / qualified as research analysts with FINRA and are not subject to NASD Rule 2711.

## Disclaimer

This document is for information purposes only and does not take account of the specific circumstances of any recipient. The information contained herein does not constitute the provision of investment advice. It is not intended to be and should not be construed as a recommendation, offer or solicitation to acquire, or dispose of, any of the financial instruments mentioned in this document and will not form the basis or a part of any contract or commitment whatsoever.

The information in this document is based on data obtained from sources believed by Commerzbank to be reliable and in good faith, but no representations, guarantees or warranties are made by Commerzbank with regard to accuracy, completeness or suitability of the data. The opinions and estimates contained herein reflect the current judgement of the author(s) on the data of this document and are subject to change without notice. The opinions do not necessarily correspond to the opinions of Commerzbank. Commerzbank does not have an obligation to update, modify or amend this document or to otherwise notify a reader thereof in the event that any matter stated herein, or any opinion, projection, forecast or estimate set forth herein, changes or subsequently becomes inaccurate.

The past performance of financial instruments is not indicative of future results. No assurance can be given that any opinion described herein would yield favourable investment results. Any forecasts discussed in this document may not be achieved due to multiple risk factors including without limitation market volatility, sector volatility, corporate actions, the unavailability of complete and accurate information and/or the subsequent transpiration that underlying assumptions made by Commerzbank or by other sources relied upon in the document were inapposite.

Neither Commerzbank nor any of its respective directors, officers or employees accepts any responsibility or liability whatsoever for any expense, loss or damages arising out of or in any way connected with the use of all or any part of this document.

Commerzbank may provide hyperlinks to websites of entities mentioned in this document, however the inclusion of a link does not imply that Commerzbank endorses, recommends or approves any material on the linked page or accessible from it. Commerzbank does not accept responsibility whatsoever for any such material, nor for any consequences of its use.

This document is for the use of the addressees only and may not be reproduced, redistributed or passed on to any other person or published, in whole or in part, for any purpose, without the prior, written consent of Commerzbank. The manner of distributing this document may be restricted by law or regulation in certain countries, including the United States. Persons into whose possession this document may come are required to inform themselves about and to observe such restrictions. By accepting this document, a recipient hereof agrees to be bound by the foregoing limitations

**Additional notes to readers in the following countries:**

**Germany:** Commerzbank AG is registered in the Commercial Register at Amtsgericht Frankfurt under the number HRB 32000. Commerzbank AG is supervised by the German regulator Bundesanstalt für Finanzdienstleistungsaufsicht (BaFin), Marie-Curie-Strasse 24-28, 60439 Frankfurt am Main, Germany.

**United Kingdom:** This document has been issued or approved for issue in the United Kingdom by Commerzbank AG London Branch. Commerzbank AG, London Branch is authorised by Bundesanstalt für Finanzdienstleistungsaufsicht (BaFin) and subject to limited regulation by the Financial Conduct Authority and Prudential Regulation Authority. Details on the extent of our regulation by the Financial Conduct Authority and Prudential Regulation Authority are available from us on request. This document is directed exclusively to eligible counterparties and professional clients. It is not directed to retail clients. No persons other than an eligible counterparty or a professional client should read or rely on any information in this document. Commerzbank AG, London Branch does not deal for or advise or otherwise offer any investment services to retail clients.

**United States:** Commerz Markets LLC ("Commerz Markets"): This document has been approved for distribution in the US under applicable US law by Commerz Markets, a wholly owned subsidiary of Commerzbank and a US registered broker-dealer. Any securities transaction by US persons must be effected with Commerz Markets. Under applicable US law; information regarding clients of Commerz Markets may be distributed to other companies within the Commerzbank group. This research report is intended for distribution in the United States solely to "institutional investors" and "major U.S. institutional investors," as defined in Rule 15a-6 under the Securities Exchange Act of 1934. Commerz Markets is a member of FINRA and SIPC.

**Canada:** The information contained herein is not, and under no circumstances is to be construed as, a prospectus, an advertisement, a public offering, an offer to sell securities described herein, solicitation of an offer to buy securities described herein, in Canada or any province or territory thereof. Any offer or sale of the securities described herein in Canada will be made only under an exemption from the requirements to file a prospectus with the relevant Canadian securities regulators and only by a dealer properly registered under applicable securities laws or, alternatively, pursuant to an exemption from the dealer registration requirement in the relevant province or territory of Canada in which such offer or sale is made. Under no circumstances is the information contained herein to be construed as investment advice in any province or territory of Canada and is not tailored to the needs of the recipient. In Canada, the information contained herein is intended solely for distribution to Permitted Clients (as such term is defined in National Instrument 31-103) with whom Commerz Markets LLC deals pursuant to the international dealer exemption. To the extent that the information contained herein references securities of an issuer incorporated, formed or created under the laws of Canada or a province or territory of Canada, any trades in such securities may not be conducted through Commerz Markets LLC. No securities commission or similar regulatory authority in Canada has reviewed or in any way passed upon these materials, the information contained herein or the merits of the securities described herein and any representation to the contrary is an offence.

**European Economic Area:** Where this document has been produced by a legal entity outside of the EEA, the document has been re-issued by Commerzbank AG, London Branch for distribution into the EEA.

**Singapore:** This document is furnished in Singapore by Commerzbank AG, Singapore branch. It may only be received in Singapore by an institutional investor as defined in section 4A of the Securities and Futures Act, Chapter 289 of Singapore ("SFA") pursuant to section 274 of the SFA.

**Hong Kong:** This document is furnished in Hong Kong by Commerzbank AG, Hong Kong Branch, and may only be received in Hong Kong by 'professional investors' within the meaning of Schedule 1 of the Securities and Futures Ordinance (Cap.571) of Hong Kong and any rules made there under.

**Japan:** Commerzbank AG, Tokyo Branch is responsible for the distribution of Research in Japan. Commerzbank AG, Tokyo Branch is regulated by the Japanese Financial Services Agency (FSA).

**Australia:** Commerzbank AG does not hold an Australian financial services licence. This document is being distributed in Australia to wholesale customers pursuant to an Australian financial services licence exemption for Commerzbank AG under Class Order 04/1313. Commerzbank AG is regulated by Bundesanstalt für Finanzdienstleistungsaufsicht (BaFin) under the laws of Germany which differ from Australian laws.

© Commerzbank AG 2013. All rights reserved. Version 9.16

**Commerzbank Corporates & Markets**

Frankfurt	London	New York	Singapore Branch	Hong Kong Branch
Commerzbank AG	Commerzbank AG London Branch	Commerz Markets LLC	Commerzbank AG	Commerzbank AG
DLZ - Gebäude 2, Händlerhaus Mainzer Landstraße 153 60327 Frankfurt	PO BOX 52715 30 Gresham Street London, EC2P 2XY	2 World Financial Center, 32nd floor New York, NY 10020-1050 Tel: + 1 212 703 4000	71 Robinson Road, #12-01 Singapore 068895  Tel: +65 631 10000	29/F, Two IFC 8 Finance Street Central Hong Kong  Tel: +852 3988 0988





**Karen Jones**  
Head of FICC Technical Analysis

Tel. +44 207 475 1425  
Mail [karen.jones@commerzbank.com](mailto:karen.jones@commerzbank.com)

**Axel Rudolph**  
Senior FICC Technical Analyst

Tel. +44 207 475 5721  
Mail [axel.rudolph@commerzbank.com](mailto:axel.rudolph@commerzbank.com)

Zentrale  
Kaiserplatz  
Frankfurt am Main  
[www.commerzbank.de](http://www.commerzbank.de)

---

Postfachanschrift  
60261 Frankfurt am Main  
Tel. +49 (0)69 / 136-20  
Mail [info@commerzbank.com](mailto:info@commerzbank.com)